



Roxtec TB seal with SL TB

Round penetration seal for a single cable or pipe in steel tank boundary structures.

The Roxtec TB (tank boundary) with SL TB is a round seal with a steel sleeve for a single cable or pipe. The entry seal has two halves with removable rubber layers making it adaptable to cables and pipes of different sizes. The front fittings ensure mechanical anchorage in the sleeve. The SL TB sleeve is welded to the structure.



- Quick and easy to install
- Adapts to cables and pipes of different sizes

Product characteristics



Fire rated



Watertight



Gas-tight

Structure of installation



Metal

Mounting type



Welding

Ratings & certificates

Fire

- A-CLASS according to IMO 2010 FTP Code

Tightness

- Gas: 2 bar (catastrophic) / 1.2 bar (tank boundaries)
- Water: 11 bar (catastrophic) / 6.6 bar (tank boundaries)

Sealing components

Sealing components



Lubricant



TB kit

For detailed information, please visit [roxtec.com](https://www.roxtec.com).



Pre-configured transit kits

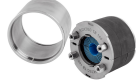
mm/kg



TB 65 KIT AISI316
WOC/AISI316



TB 65 KIT AISI316
WOC/PRIMED



TB 105 KIT AISI316
WOC/AISI316



TB 105 KIT AISI316
WOC/PRIMED

Product	Configuration	Aperture dimensions ∅	Weight	Art. no
TB 65 KIT AISI316 WOC/AISI316	1x (8.0-30.0)	80 - 82	1.6	196482
TB 65 KIT AISI316 WOC/PRIMED	1x (8.0-30.0)	80 - 82	1.6	184905
TB 105 KIT AISI316 WOC/AISI316	1x (24.0-54.0)	120 - 122	2.9	200103
TB 105 KIT AISI316 WOC/PRIMED	1x (24.0-54.0)	120 - 122	2.8	200102

The product information provided by Roxtec does not release the purchaser of the Roxtec system, or part thereof, from the obligation to independently determine the suitability of the products for the intended process, installation and/or use. Roxtec gives no guarantee for the Roxtec system or any part thereof and assumes no liability for any loss or damage whatsoever, whether direct, indirect, consequential, loss of profit or otherwise, occurred or caused by the Roxtec systems or installations containing components not manufactured by an authorized manufacturer and/or occurred or caused by the use of the Roxtec system in a manner or for an application other than for which the Roxtec system was designed or intended. Roxtec expressly excludes any implied warranties of merchantability and fitness for a particular purpose and all other express or implied representations and warranties provided by statute or common law. User determines suitability of the Roxtec system for intended use and assumes all risk and liability in connection therewith. In no event shall Roxtec be liable for indirect, consequential, punitive, special, exemplary or incidental damages or losses. The Roxtec products are offered and sold in accordance with the conditions of the Roxtec General Terms of Sales. The latest version of the Roxtec General Terms of Sales can be downloaded from <https://www.roxtec.com/en/about-us/about-roxtec/general-terms-of-sales/> We reserve the right to make changes to the product and technical information without further notice. Any errors in print or entry are no claims for indemnity. The content of this publication is the property of Roxtec International AB and is protected by copyright. This document was generated on: 2024-04-27